



Strategic plan for safeguarding adults and children

2024/25

Foreword

There is nothing more important than being able to identify and support children, young people and adults at risk of abuse or neglect. The Trust is committed to everyone, ensuring that safeguarding principles are placed at the heart of everything we do. We have an excellent reputation for safeguarding standards and we take a proactive approach to promoting the wellbeing and welfare of the populations we serve.

We take seriously our statutory duty to safeguard and advocate for the most vulnerable people in our communities. Safeguarding and professional curiosity should be the ever-present concern of every person working in or supporting the services we deliver. Safeguarding is a crucial role for all staff and one that ensures that some of the most vulnerable individuals at risk; children, young people, and adults, are provided with protection from harm, abuse, and neglect, enabling them to retain their independence, wellbeing, dignity, and choice.

The Wirral Community Health and Care NHS Foundation Trust Safeguarding Teams provide support, advice, education, and training, in all safeguarding matters, to all our staff. Our aim is to ensure the prevention of harm, exploitation, and abuse of everyone, through the provision of high quality care, responding effectively to concerns and allegations whilst working collaboratively with our partner agencies.

All quality care delivered by our organisation promotes a safety culture that supports our vision. It places safeguarding and promotion of the welfare of children, young people, and adults at risk, above all other aims.

Safeguarding is everyone's responsibility.



Paula Simpson

Chief Nurse

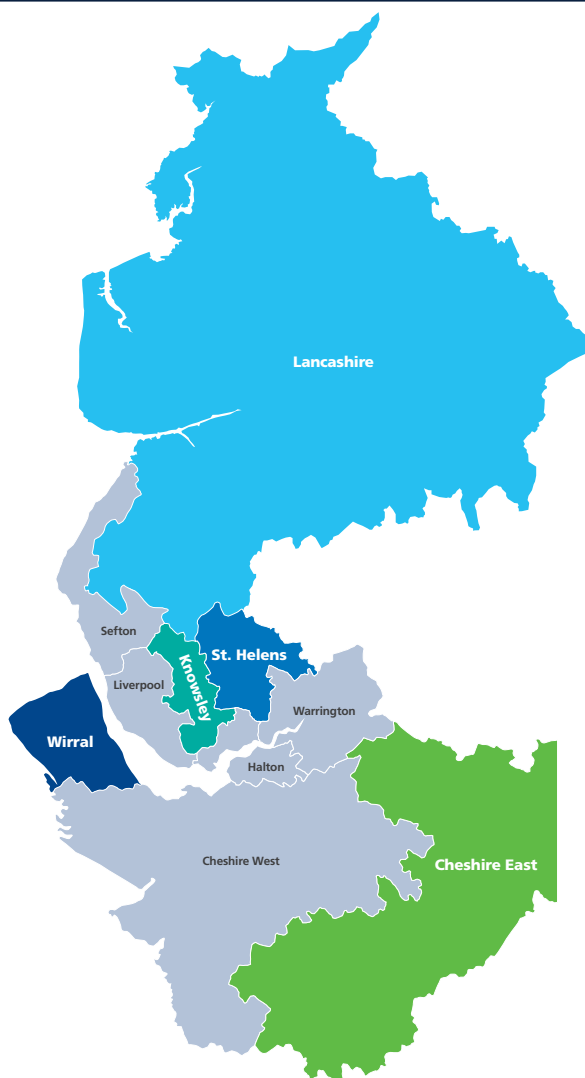
Director of Infection Prevention and Control,
Executive Lead for Quality Governance and Regulatory Compliance,
Executive Safeguarding Lead, Health Inequalities Lead.

Our Safeguarding Vision

Safeguarding principles and best practice are our core business, underpinning the provision of high quality care.

Safeguarding governance is the golden thread that connects everything we do within the organisation across all of our localities ensuring everyone within our communities are protected from harm and feel safe at all times.

Our expert Safeguarding Teams cover all five localities and Trust-wide services:



Cheshire East 0-19+
Children's Services 0-19+

Knowsley 0-25
Children's Services 0-25

St Helens 0-19+
Children's Services 0-19+

Wirral 0-19
Children's Services 0-19

Safeguarding Adults
Covering all Trust services

Lancashire 0-19+
Children's Services 0-19+
(from 1 October 2024)

Our Trust Values

Our Common Purpose:

Together...

we will support you and your community to live well.

Our values:

Compassion

Supportive and caring, listening to others.

Open

Communicating openly, honestly and sharing ideas.

Trust

Trusted to deliver, feeling valued and safe.



Every person that uses our services and every person we employ should be treated fairly, equally and with respect. We want to be an organisation that people trust, and one that values differences. We want to reflect all the people and communities we serve, in the services we deliver, and the staff we employ.

Voice of the people

Individuals have complex lives and have different views on what is important. It is vital that Health and Care professionals take time to talk to our communities, listen to what our people are saying through various means of communication, observing their behaviours and understand what they really need.

The voice of the person is a fundamental principle, to enable individualised care. Everyone must feel part of any process, this is their journey, so being a part of any decision making is essential to ensuring outcome-focused solutions.

- We will work with our communities to fully understand their needs and from their point of view. Allowing their voice to influence our decision making.
- We will share learning from experience and good practice to support staff to improve their practice.
- This will be measured through, safeguarding supervision and health assessments for children -Target 90% The voice of the child will monitored through our annual audit from the feedback from our Children Look After.

The voice of the adult is captured within the safeguarding referral, this is monitored through quality assurance and audit.



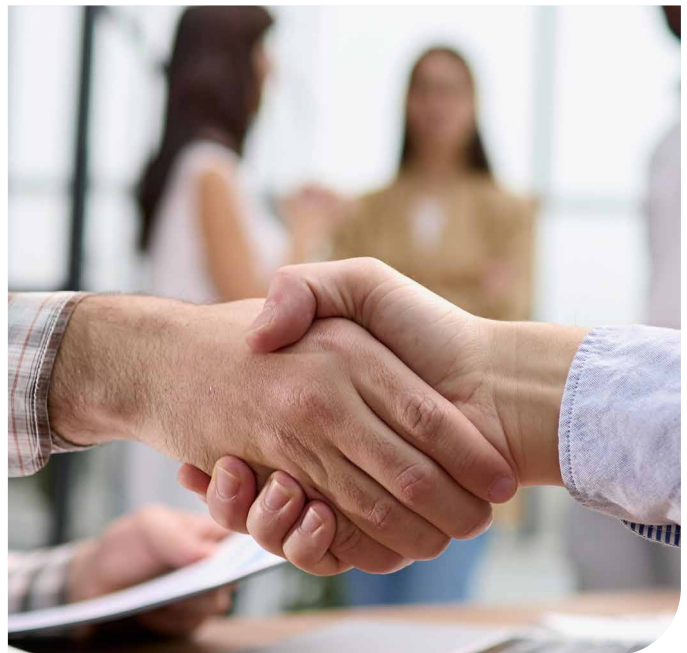
Partnership

Successful collaborative working with internal and external partners ensures effective communication, timely and proportionate information sharing, which improves outcomes for individuals. Understanding partner's roles and how they can support our people is crucial, so that the right assistance is delivered without delay providing the best possible service and keeping our communities safe.

Learning from experience provides opportunities for organisations to improve and replicate best practice, and to support future policy and process development.

- We will work with individuals, and professionals in partner agencies, to ensure improved safeguarding outcomes for individuals.
- We will share with partner agencies, appropriate and proportionate information to keep children, young people, and adults at risk, safe.
- We will measure this through our attendance at meetings. All children safeguarding meetings to ensure we contribute to care planning -Target 90%.

MAPPA and MARAC meetings for adults - Target 90%.



MAPPA - Multi Agency Public Protection Arrangements

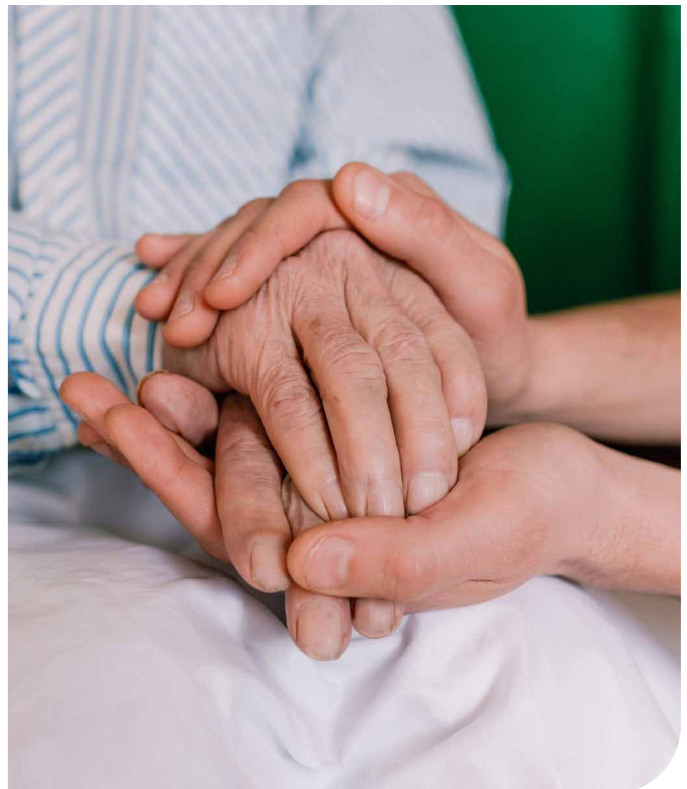
MARAC - Multi Agency Risk Assessment Conference

Empowerment

The Trust will empower individuals to understand abuse and neglect is a vital element of the safeguarding process. In order for people to be able to protect themselves from abuse and neglect, they must first understand what abuse and neglect is and what it could look like. Giving our people the support to gain the confidence in their own ability to take this step forward to take control of their own future is true liberation.

The Trust will empower our staff to become better leaders within the delivery of safeguarding practice. Providing them with the correct tools to enable them to make timely decisions and trusting them to use professional curiosity, respecting that they are the subject matter experts in their field. This will enable maximum effectiveness and efficiency for both the organisation and for our communities.

- We will provide education, training and supervision to support staff knowledge and confidence.
- We will support staff to recognise and report abuse and neglect, using evidence-based assessments.
- We will encourage staff to demonstrate professional curiosity and appropriate professional challenge, escalating concerns where applicable.
- This will be measured through our attendance at safeguarding training - Target 90% . Learning will be monitored through our adult and children safeguarding audits.



Protection

As an integral part of providing high quality health care there is a collective responsibility to ensure the protection of our people, enabling them to live free from any harm, abuse or neglect. We want our teams to recognise all risks from harm at the earliest opportunity, responding and dealing with such situations expeditiously. This will ensure the welfare of every individual within our community.

Prevention is a key principle in safeguarding and educating our staff and our communities to be proactive about health and wellbeing is paramount. Everyone has a role to play in preventing abuse and neglect Interventions such as Zero Tolerance, Think Families and Early Help provide a holistic approach to ensure all needs are being met. Working to prevent incidents occurring or escalating we must ensure our staff have the confidence to professionally challenge.

- We will ensure that decisions or actions taken are proportionate to the risk identified.
- We will engage with people on an individual basis, ensuring each case is reviewed on its own merits.
- We represent the Trust at Committee and working together we identify common themes from SAR, DHR, LeDeR and CSPR and factor into training.

This learning is monitored through audits to ensure best practice is being adhered to.



DHR - Domestic Homicide Reviews

SAR - Safeguarding Adult Review

LeDeR - Learning Disability Mortality Review / People with a learning disability and autistic people

CSPR - Child Safeguarding Practice Reviews

Always remember...



Safeguarding is everyone's responsibility!